



SCAN FOR
MORE INFORMATION

DRIJA

1 YEAR
WARRANTY

AIR FRYER CARTOCCIO

4.5L



**TEMPERED
GLASS**



EXTRACTORES



ESTUFAS



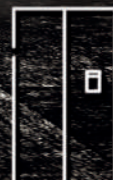
MICROONDAS



HORNOS



VINERAS



REFRIGERADORAS



CALENTADORES
DE AGUA

USER MANUAL

110V / 60Hz

NOTE: To purchase accessories and / or spare parts for this product, contact us at the Contact Center (depending on the number of your country that indicates the warranty certificate or our social media)

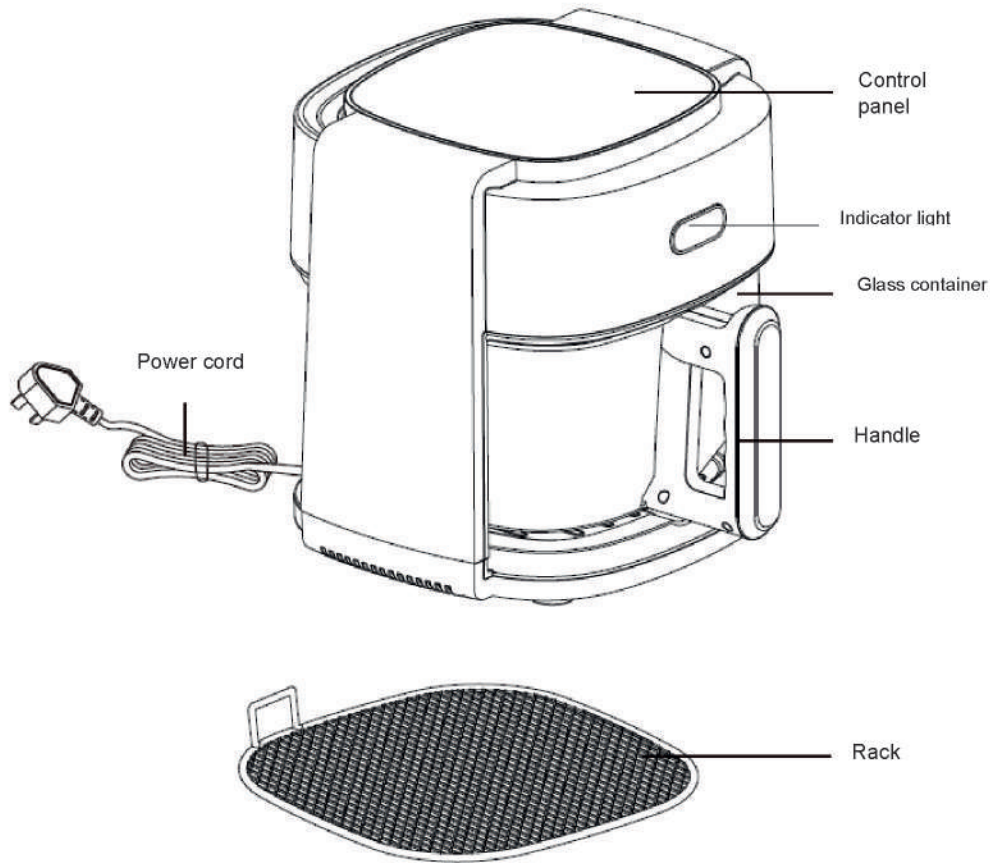
IMPORTANT INFORMATION

- Please read this manual carefully before using the air fryer. This manual contains important information concerning your safety, as well as recommendations on the correct operation of the unit and its maintenance.
- Please use a separate electrical outlet, do not share the plug with other electrical appliances.
- Do not use on an uninsulated table or place a heating pad under the product before use.
- This product is for household use only.
- For the first use or when the glass pot cools down, you can preheat it for better effect.
- Do not touch the glass cooker when cooking.
- Food should be placed on the rack and not block the air duct.
- When cooking, do not add water or other non-ventilated/non-temperature resistant utensils (such as plastic) to the glass cooker, so as not to affect the cooking effect.
- After use, unplug the power cord immediately.
- Please unplug the power supply and wait for the product to cool down completely before cleaning.
- Do not clean the machine directly with water, you can use a soft wrung out cloth to wipe off stains, do not use alcohol or abrasive and/or volatile substances to clean the product.
- When the product is working, the distance between the product and the wall must be more than 10cm.
- If you find the product has abnormal noise or strong vibration during use, please turn off the power first, and then contact the authorized center for check and/or repair.
- Do not use a damaged power supply or plug to avoid electric shock and fire.
- This appliance is not intended for use by persons with reduced physical, sensory or mental capabilities, or lack of experience and knowledge (including children) unless they have been given supervision or instruction concerning use of the appliance by a person responsible for their safety.
- If the power cord is damaged, it must be replaced by professionals such as the manufacturer and its service department.

PRODUCT PARAMETERS

NAME	MODEL	VOLTAGE	FREQUENCY	POWER
AIR FRYER	CARTOCCIO	110V	60Hz	1200W

PRODUCT STRUCTURE

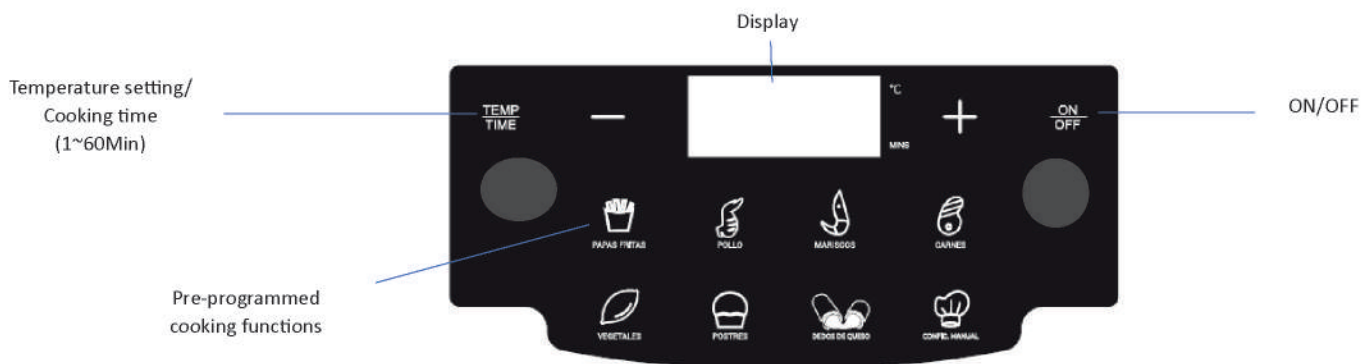


Note: the product image is for reference only, it is subject to the actual product and its accessories.

IMPORTANT

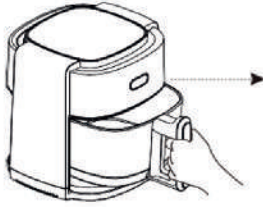
The manufacturer has the right to make design changes to the product. The product you have purchased may have been improved and may not be consistent with the manual, however; there will be no change in the performance of the product, please use the product with confidence.

CONTROL PANEL

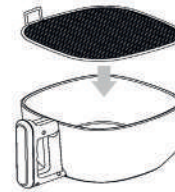


INSTRUCTIONS FOR USE

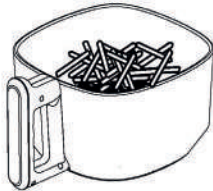
1. Hold the handle and pull out the glass container.



2. After cleaning the grid and the container, place the grid inside the container.



3. Distribute food evenly



4. After placing the food, push the container into the main unit.



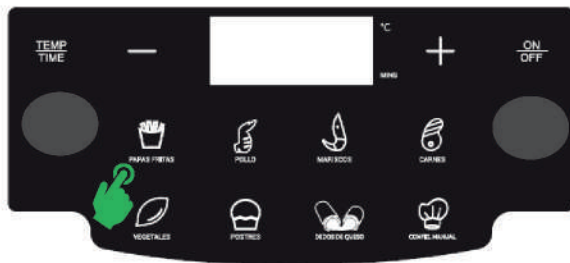
5. Connect to the power source, insert the cable into the socket.



6. Press **ON/OFF** to turn on the unit.



7. Select the desired program; the corresponding indicator will light up.



Note: within 3 seconds, the fryer will start operation automatically.

8. To adjust the temperature press **TEMP/TIME**



9. You can set up the fryer manually by pressing  and set the temperature/cooking time.



10. If you need to turn the food during cooking, hold the handle and pull out the glass container. After turning the food, push the container into the main unit.



11. After cooking, the product goes to rest, remove the glass container and place it on a heat-resistant surface. When the product is not in use, unplug the power cord.



PROGRAM / TEMPERATURE / COOKING TIME

PROGRAM	DEFAULT TEMPERATURE	TEMPERATURE RANGE	PREPROGRAMMED COOKING TIME	COOKING TIME RANGE
French fries	190°C	60°C~200°C	13 MIN	1~60 MIN
Wings	180°C	60°C~200°C	15 MIN	1~60 MIN
Shrimps	170°C	60°C~200°C	7 MIN	1~60 MIN
Meat	180°C	60°C~200°C	8 MIN	1~60 MIN
Vegetables	200°C	60°C~200°C	38 MIN	1~60 MIN
Deserts	170°C	60°C~200°C	23 MIN	1~60 MIN
Egg tart	170°C	60°C~200°C	11 MIN	1~60 MIN
DIY	180°C	60°C~200°C	15 MIN	1~60 MIN

CAUTION

DO NOT touch the glass container while cooking! You may get burned.

IMPORTANT

1. As a precaution and for safety reasons, DO NOT touch the glass container while it is cooking, you may suffer burns.
2. Be careful with the air outlet and steam discharge to avoid burns.
- 3. Product should be kept out of reach of children; they may suffer burns if they come into contact with the glass container.**

CLEANING AND MAINTENANCE

Note: Wait until the glass container cools down before cleaning.

1. Before cleaning, disconnect the power cord from the wall outlet.
2. The glass container and rack can be washed in the dishwasher.
3. Please avoid hitting the glass basket during the cleaning process.
4. After washing, you can dry the glass container and grid with a dry cloth.

FAILURE ANALYSIS

FAILURE	
Smoke and odors when using the product for the first time	When using for the first time, use for 5 minutes without food, so that the film that protects the internal parts evaporates.
Product does not work	Check if the product is properly connected to the outlet, or if the glass container is correctly placed inside the device.
Product does not heat	Check if the power button is on, or if the carbon fiber heating tube is illuminated.
	The heating tube does not illuminate, please contact after-sales service.
Broken glass container	Please contact after-sales service

If you have any problems during use, please contact our after-sales service.



In case your glass container breaks, keep the handle screws, they are indispensable.

DRIJA

UP TO
2 YEARS
WARRANTY

BUILT-IN
HOME APPLIANCES

